

Trombone, Baritone B^1 , BassoonTempo $\text{♩} = 76$

6

Measures 6-8 of section 6. The music is in bass clef with a key signature of two flats (B-flat and E-flat) and a common time signature (C). Measure 6 starts with a quarter rest, followed by a quarter note G2, an eighth note G2, and a quarter note F2. Measure 7 continues with a quarter note E2, a quarter note D2, a quarter note C2, and a quarter note B1. Measure 8 begins with a quarter note A1, followed by a quarter note G1, and a quarter note F1. The section concludes with a final whole note G1.

Tempo $\text{♩} = 100$

7

Measures 9-12 of section 7. The music is in bass clef with a key signature of three flats (B-flat, E-flat, and A-flat) and a 3/4 time signature. Measure 9 starts with a quarter note G2, followed by a quarter note F2, and a quarter note E2. Measure 10 continues with a quarter note D2, a quarter note C2, and a quarter note B1. Measure 11 begins with a quarter note A1, followed by a quarter note G1, and a quarter note F1. Measure 12 starts with a quarter note E1, followed by a quarter note D1, and a quarter note C1. The section concludes with a final whole note B1.

Tempo $\text{♩} = 116$

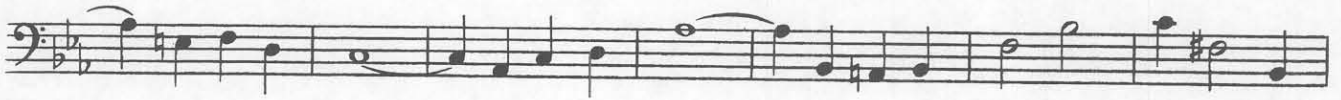
8

Measures 13-15 of section 8. The music is in bass clef with a key signature of two flats (B-flat and E-flat) and a 6/8 time signature. Measure 13 starts with a quarter note G2, followed by a quarter note F2, and a quarter note E2. Measure 14 continues with a quarter note D2, a quarter note C2, and a quarter note B1. Measure 15 begins with a quarter note A1, followed by a quarter note G1, and a quarter note F1. The section concludes with a final whole note E1.

Trombone, Baritone B^1 , Bassoon

Tempo $\text{♩} = 120$

9



Tempo $\text{♩} = 63$

10

